



Naylors

ESTATE AGENTS CHARTERED SURVEYORS



12 Orchard Close

Desborough, Kettering, NN14 2LR

£1,500 Per Calendar Month

An opportunity to rent this well presented, three bedroomed property located in Desborough.

The property comprises: entrance hall, WC cloakroom, kitchen diner, master double bedroom with en suite, second double bedroom with office/dressing room off, single bedroom and family bathroom. The front of the property benefits from off road parking, with an enclosed garden to the rear.

Viewing

Please contact our Market Harborough Office on 01858 450020 if you wish to arrange a viewing appointment for this property or require further information.



3



2

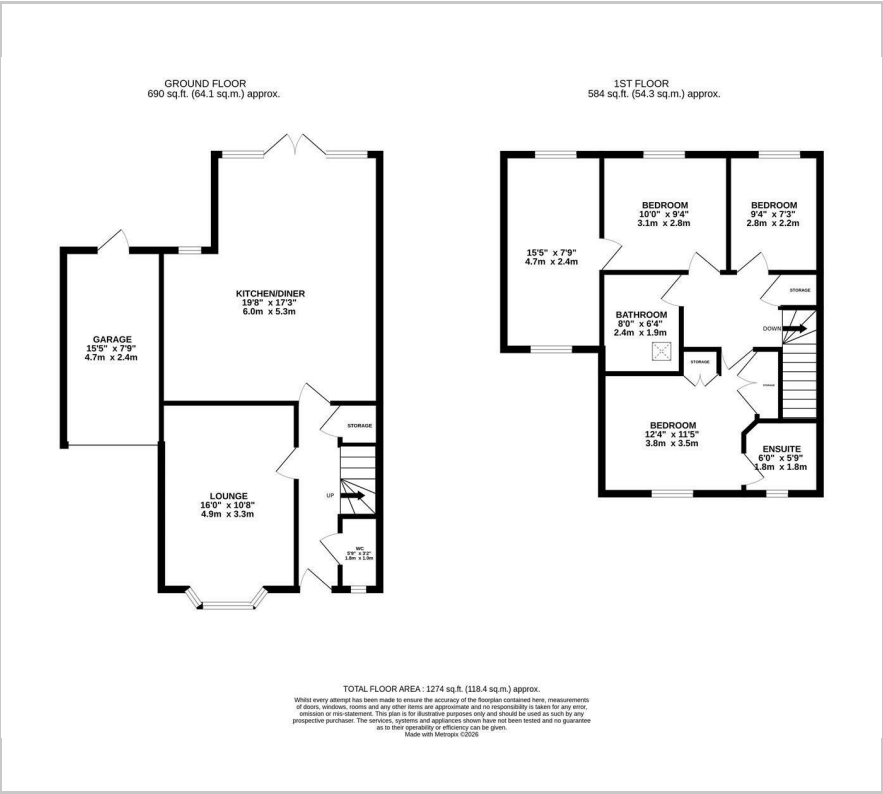


2



C

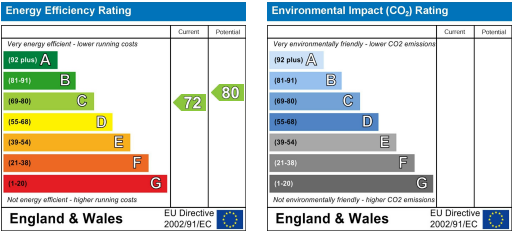
Floor Plan



Area Map



Energy Efficiency Graph



These particulars, whilst believed to be accurate are set out as a general outline only for guidance and do not constitute any part of an offer or contract. Intending purchasers should not rely on them as statements of representation of fact, but must satisfy themselves by inspection or otherwise as to their accuracy. No person in this firms employment has the authority to make or give any representation or warranty in respect of the property.